



## Norway Gate, London, SE16 7TR

Located by the picturesque Greenland Dock is this unique one double bedroom apartment enjoying marvellous water views. The property boasts a naturally bright living room, a kitchen with plenty of storage space, a generous double bedroom with built in wardrobes, and a well kept bathroom. An allocated underground car parking space comes with the apartment. The greenery of the Stave Hill Ecological Park and the Thames are just round the corner. Canada Water underground station and up and coming Masterplan are a short stroll away.

Service Charge: £2,206.39 PA  
Ground Rent: £457 PA  
Years on the Lease: 88  
Council Tax C

Council tax and, where applicable, lease information, service charges and ground rent, floorplan, sizes, are given as a guide only and should always be checked and confirmed by your Solicitor prior to exchange of contracts.

- Chain Free
- One Double Bedroom Apartment
- Stunning Views
- Picturesque Setting
- Underground Gated Car Parking Space
- Plenty Of Storage Space
- Triple Aspect
- Moments from Canada Water Masterplan

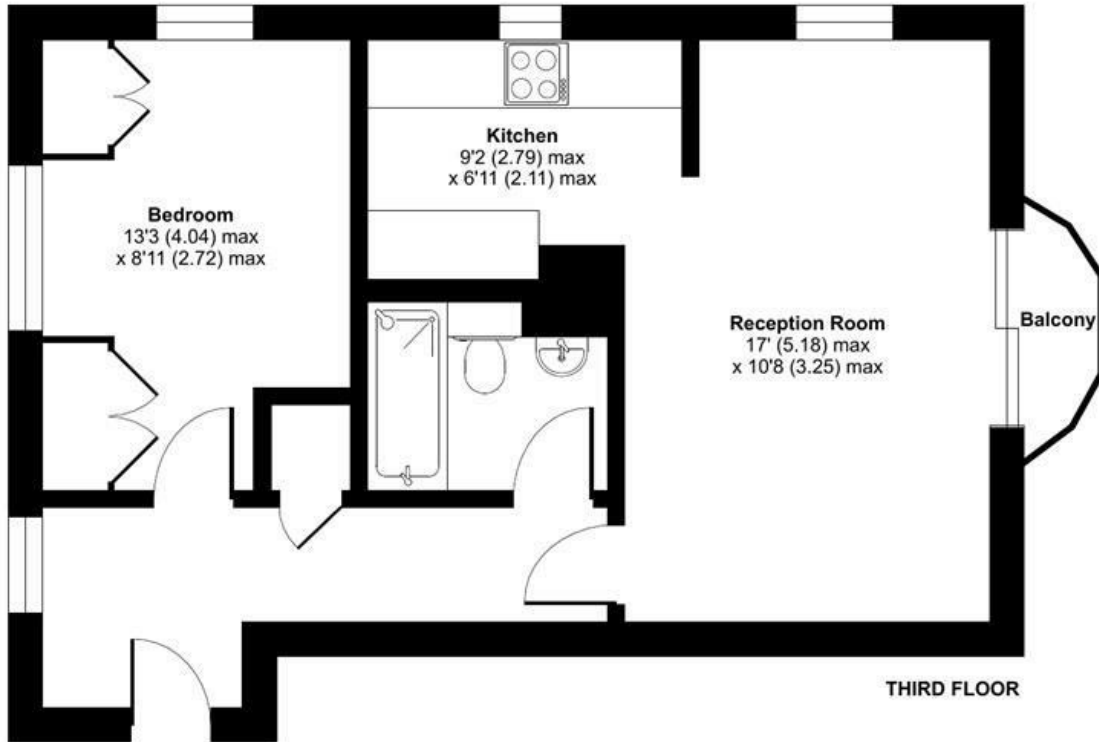
**Alex & Matteo**  
ESTATE AGENTS

**Asking price £325,000**

# Norway Gate, London, SE16

Approximate Area = 484 sq ft / 45 sq m

For identification only - Not to scale



**Alex & Matteo**  
ESTATE AGENTS



**Certified  
Property  
Measurer**

Floor plan produced in accordance with RICS Property Measurement Standards incorporating International Property Measurement Standards (IPMS2 Residential). © nitchcom 2023. Produced for Alex & Matteo Estate Agents. REF: 967015

Energy Efficiency Rating		
	Current	Potential
Very energy efficient - lower running costs		
(92 plus) <b>A</b>		
(81-91) <b>B</b>		
(69-80) <b>C</b>	75	76
(55-68) <b>D</b>		
(39-54) <b>E</b>		
(21-38) <b>F</b>		
(1-20) <b>G</b>		
Not energy efficient - higher running costs		
England & Wales		
	EU Directive 2002/91/EC	